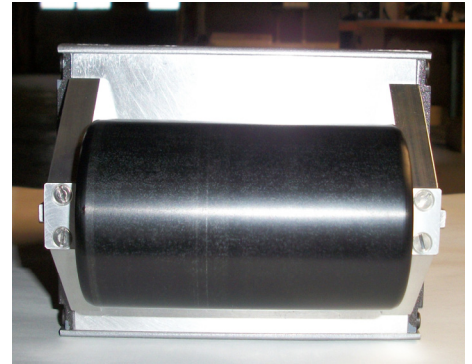
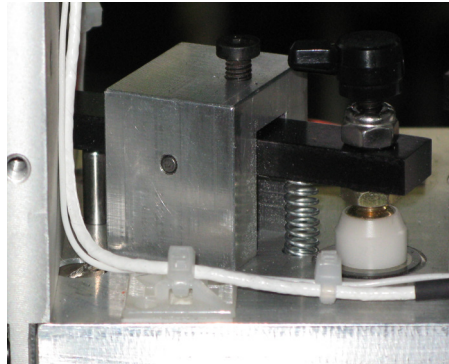
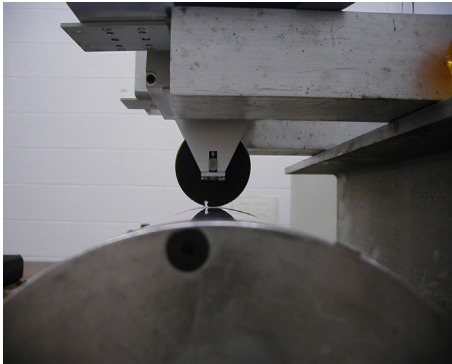
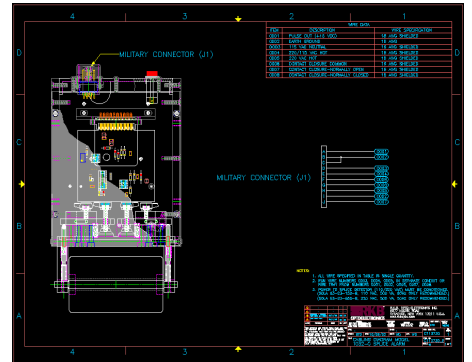
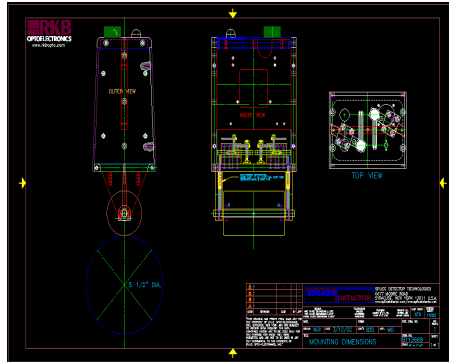


Equipment Pictorial Model 1032C Enforcer® Metalized Splice Detector™ Technology



R.K.B. OPTO-ELECTRONICS, INC.

6677 Moore Road • Syracuse, New York • 13211 • United States of America

Tel: +001-315-455-6636 • Fax: +001-315-455-8216 • Email: sales@splicedetector.com

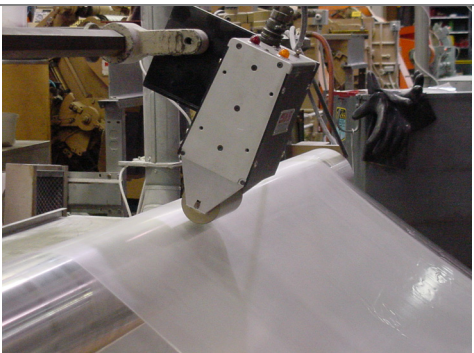
Internet: www.rkbopto.com / www.splicedetector.com / www.splicedetector.net



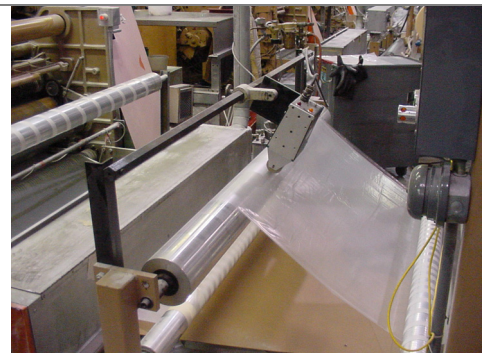
Model 1032C Enforcer® Metalized Splice Detector™ Technology Alcan Packaging Installation



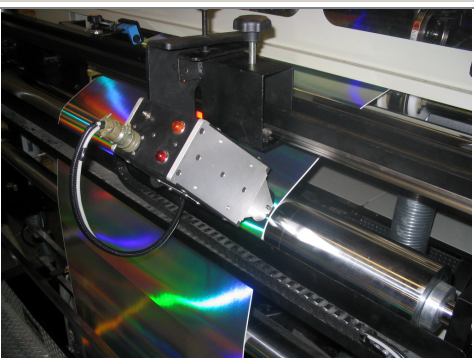
Model 1032C Enforcer® Metalized Splice Detector™ Technology Alcan Packaging Installation



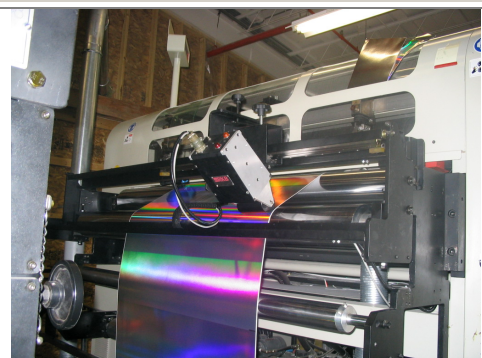
Model 1032C Enforcer® Metalized Splice Detector™ Technology Curwood Installation



Model 1032C Enforcer® Metalized Splice Detector™ Technology Curwood Installation



Model 1032C Enforcer® Metalized Splice Detector™ Technology European Installation



Model 1032C Enforcer® Metalized Splice Detector™ Technology European Installation

R.K.B. OPTO-ELECTRONICS, INC.

6677 Moore Road • Syracuse, New York • 13211 • United States of America
Tel: +001-315-455-6636 • Fax: +001-315-455-8216 • Email: sales@splicedetector.com
Internet: www.rkbopto.com / www.splicedetector.com / www.splicedetector.net



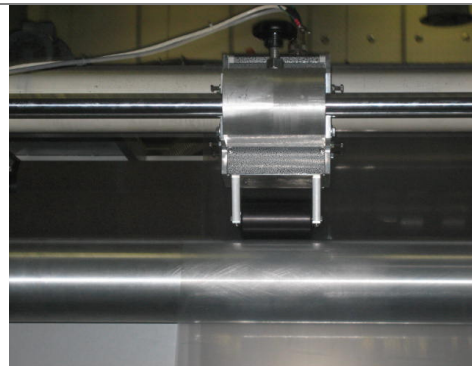
**Model 1032C Enforcer® Metalized
Splice Detector™ Technology
European Installation**



**Model 1032C Enforcer® Metalized
Splice Detector™ Technology
Asian Installation**



**Model 1032C Enforcer® Metalized
Splice Detector™ Technology
European Installation**



**Model 1032C Enforcer® Metalized
Splice Detector™ Technology
Asian Installation**

R.K.B. OPTO-ELECTRONICS, INC.

6677 Moore Road • Syracuse, New York • 13211 • United States of America
Tel: +001-315-455-6636 • Fax: +001-315-455-8216 • Email: sales@splicedetector.com
Internet: www.rkbopto.com / www.splicedetector.com / www.splicedetector.net