




### Expand Inspection Capabilities

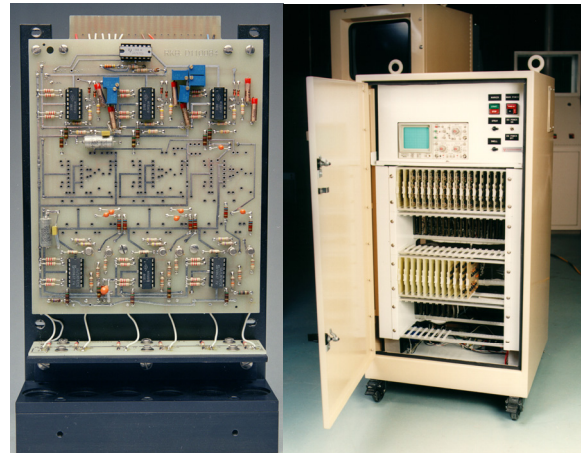
The Model 2060 ANALYZER® Flaw Detection Technology makes it possible to economically expand inspection capabilities beyond basic hole detection. The Model 2060 ANALYZER® Flaw Detection Technology provides complete hole detection and classification capabilities while also providing detection of visual defects such as dirt, spots, scale, fish eyes, and splices.

### Improve Productivity

The Model 2060 ANALYZER® Flaw Detection Technology is suitable for a wide variety of web inspection applications including inspection of low basis weight materials. These systems have been proven over time under real world conditions on production equipment such as sheeters, coaters, slitters, rewinders, paper machines, supercalenders, and tissue machines.

The Model 2060 ANALYZER® Flaw Detection Technology can be quickly and easily added to existing production equipment. These systems provide production, maintenance, and setup personnel with immediate notification of defects and the information they need to quickly locate and correct defect producing conditions. Choose our Model 2060 ANALYZER® Flaw Detection Technology to improve the productivity and profitability of your production operations.

	
<b>TECHNICAL SPECIFICATIONS</b>	
<b>Defects Types Detected</b>	Dirt Fish Eyes Holes Scale Splices Spots
<b>Minimum Detectable Defect</b>	1/32" (0.8 mm) Diameter
<b>Maximum Web Speed</b>	6,000'/min. (1,828 m/min.)
<b>Basis Weight Range</b>	Subject to Tests
<b>Material Color Range</b>	Unlimited
<b>Illumination</b>	Infrared Light Sources
<b>Ambient Temperature</b>	40 to 160° F (4 to 70° C)
<b>Power</b>	220/240 VAC 50/60 Hz Single Phase 3 -10 KW Dependent On Width Alternative Power Requirements Per Quotation
Specifications are subject to change without notice.	



**R.K.B. OPTO-ELECTRONICS, INC.**

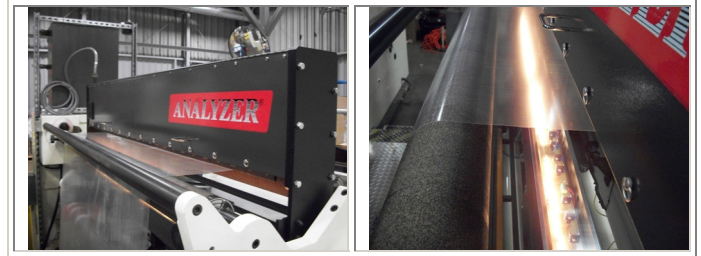
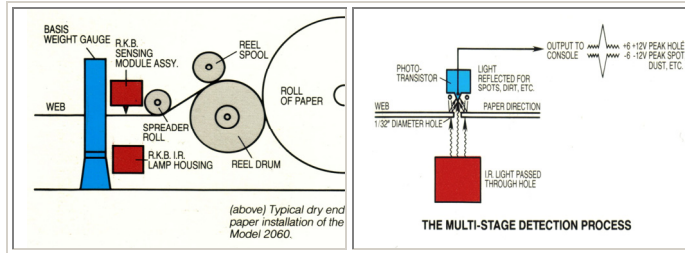
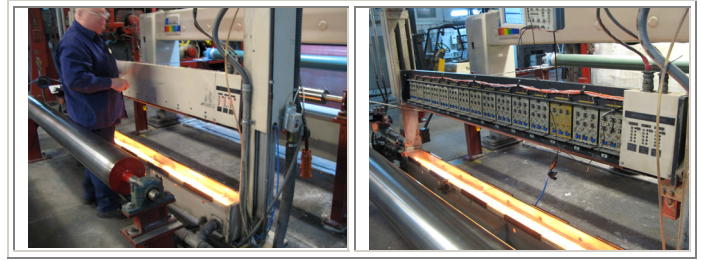
6677 Moore Road • Syracuse, New York • 13211 • United States of America  
 Tel: +001-315-455-6636 • Fax: +001-315-455-8216 • Email: sales@rkbopto.com  
 Internet: www.rkbopto.com / www.webinspection.us / www.hole-detection.com

# Model 2060 ANALYZER® Flaw Detection Technology



## Fully Qualify Your Products

Each Model 2060 ANALYZER® Flaw Detection Technology is designed to span the entire web width for 100 percent inspection of the web material. Products can now be fully qualified prior to shipment to customers. Our Model 1280 Guardian® Multicolor Edge Marking™ Technology can also be combined with a Model 2060 ANALYZER® Flaw Detector to provide visible edge marks that positively identify defect types and locations for manual or automatic product classification.



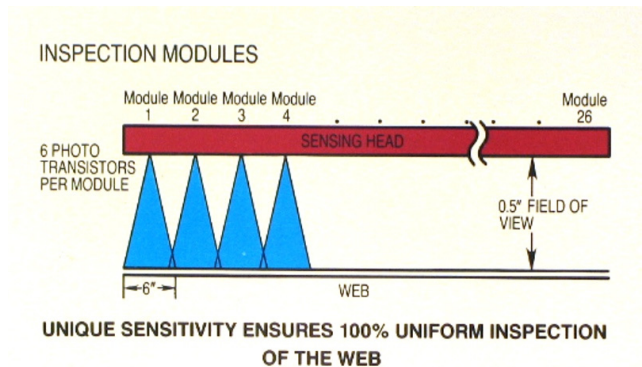
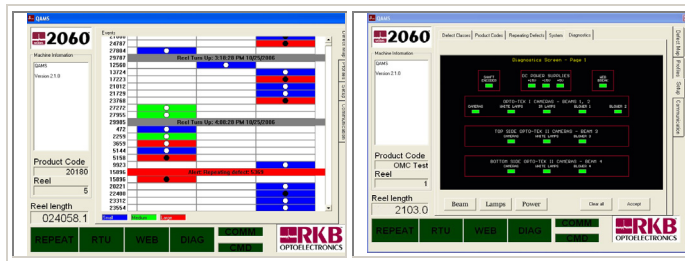
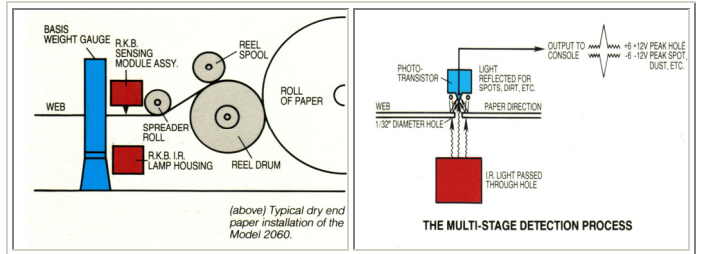
## Call RKB

Call us to discuss your applications and to learn more about the industry's most complete line of web inspection related products.

## Add Analysis and Reporting

Repeating defect detection capabilities are included with each Model 2060 ANALYZER® Flaw Detection Technology. Our QAMS™ Quality Assurance Management System software can also be added to the system to provide:

- Analysis and Charting
- Footage Tracking
- Product Code Identification
- Material and Process Traceability
- Real Time and Historical Reporting
- Status and Parameter Displays
- On-Line Diagnostics



### R.K.B. OPTO-ELECTRONICS, INC.

6677 Moore Road • Syracuse, New York • 13211 • United States of America  
 Tel: +001-315-455-6636 • Fax: +001-315-455-8216 • Email: sales@rkbopto.com  
 Internet: www.rkbopto.com / www.webinspection.us / www.hole-detection.com