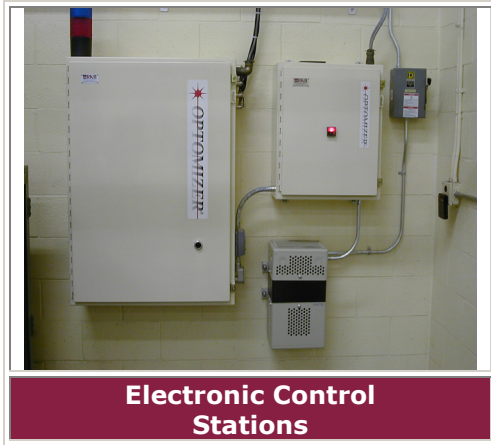


EQUIPMENT PICTORAL
Model 3030 OPTOMIZER® Machine Vision Web Inspection Technology



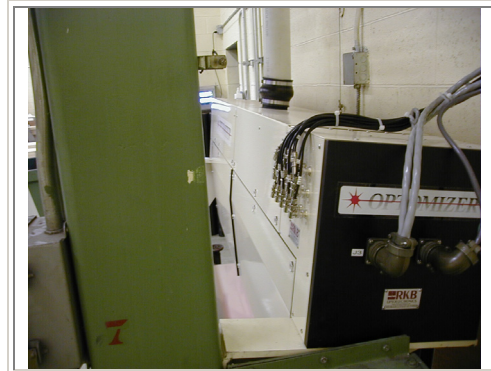
R.K.B. OPTO-ELECTRONICS, INC.

6677 Moore Road • Syracuse, New York • 13211 • United States of America
Tel: +001-315-455-6636 • Fax: +001-315-455-8216 • Email: sales@rkbopto.com
Internet: www.rkbopto.com / www.webinspection.us / www.hole-detection.com

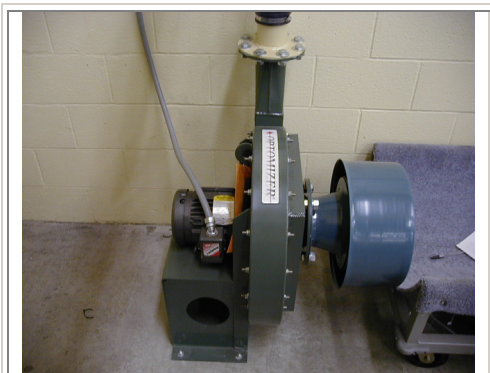
**Model 3030 OPTOMIZER® Machine Vision Web
Inspection Technology**



**Drive Side
View**



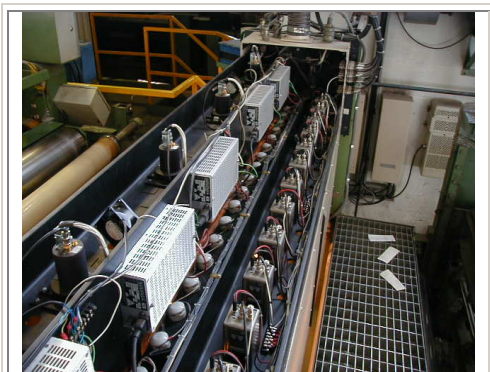
**Inspection Assembly
Drive Side**



**System Air
Purge Unit**



**Electronic Engineering
Workstation**



**Lighting/Camera
Layout**

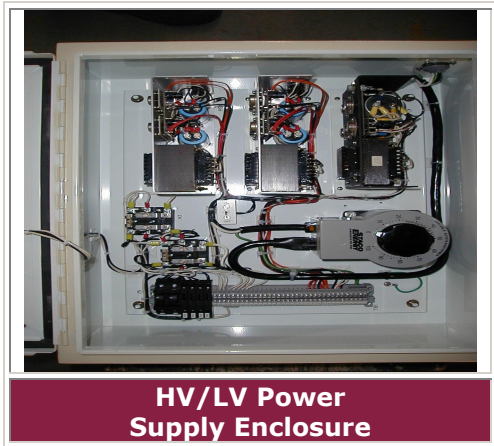


**Military Spec
Connections**

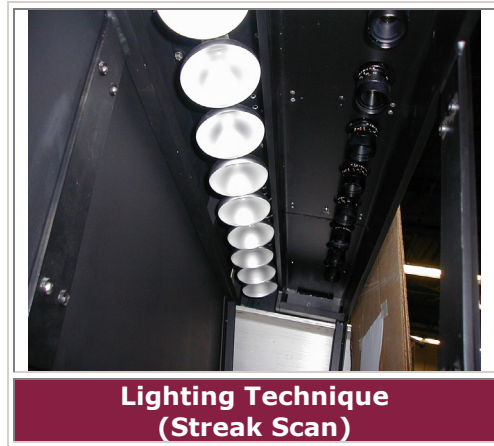
R.K.B. OPTO-ELECTRONICS, INC.

6677 Moore Road • Syracuse, New York • 13211 • United States of America
Tel: +001-315-455-6636 • Fax: +001-315-455-8216 • Email: sales@rkbopto.com
Internet: www.rkbopto.com / www.webinspection.us / www.hole-detection.com

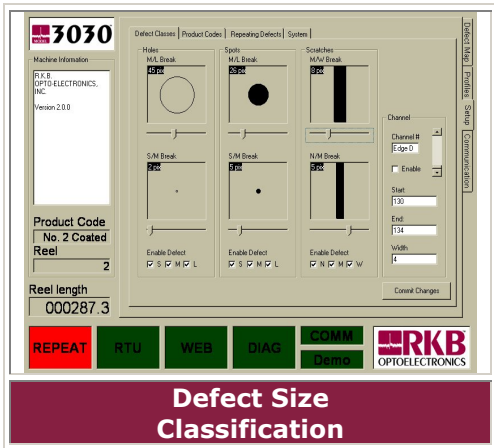
Model 3030 OPTOMIZER® Machine Vision Web Inspection Technology



HV/LV Power Supply Enclosure



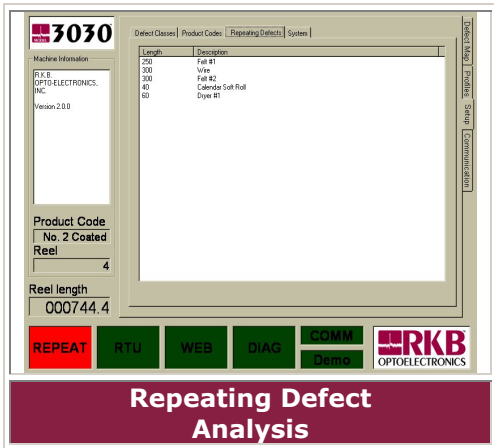
Lighting Technique (Streak Scan)



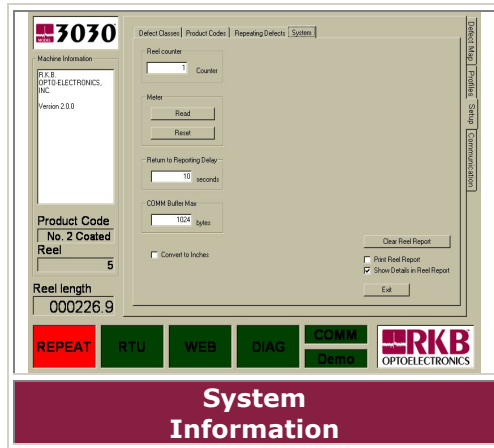
Defect Size Classification



Product Code Selection



Repeating Defect Analysis



System Information

R.K.B. OPTO-ELECTRONICS, INC.

6677 Moore Road • Syracuse, New York • 13211 • United States of America
 Tel: +001-315-455-6636 • Fax: +001-315-455-8216 • Email: sales@rkbopto.com
 Internet: www.rkbopto.com / www.webinspection.us / www.hole-detection.com

Model 3030 OPTOMIZER® Machine Vision Web Inspection Technology



3040

Machine Information
R.K.B. OPTOELECTRONICS, INC.
Version 2.0.0

Product Code
Test 01

Reel
1

Reel length
000377.3

REPEAT RTU WEB DIAG COMM Demo RKB OPTOELECTRONICS

Communications

3030

Machine Information
R.K.B. OPTOELECTRONICS, INC.
Version 2.0.0

Product Code
No. 2 Coated Reel

Reel length
000420.7

REPEAT RTU WEB DIAG COMM Demo RKB OPTOELECTRONICS

Defect Profiling

3030

Machine Information
R.K.B. OPTOELECTRONICS, INC.
Version 2.0.0

Product Code
No. 2 Coated Reel

Reel length
000364.8

REPEAT RTU WEB DIAG COMM Demo RKB OPTOELECTRONICS

Hole Defect Profile

3030

Machine Information
R.K.B. OPTOELECTRONICS, INC.
Version 2.0.0

Product Code
No. 2 Coated Reel

Reel length
000629.3

REPEAT RTU WEB DIAG COMM Demo RKB OPTOELECTRONICS

Spot Defect Profile

3030

Machine Information
R.K.B. OPTOELECTRONICS, INC.
Version 2.0.0

Product Code
No. 2 Coated Reel

Reel length
000239.4

REPEAT RTU WEB DIAG COMM Demo RKB OPTOELECTRONICS

Coating Streak Profile

3030

Machine Information
R.K.B. OPTOELECTRONICS, INC.
Version 2.0.0

Product Code
No. 2 Coated Reel

Reel length
000484.5

REPEAT RTU WEB DIAG COMM Demo RKB OPTOELECTRONICS

Defect Real Time Mapping

R.K.B. OPTO-ELECTRONICS, INC.

6677 Moore Road • Syracuse, New York • 13211 • United States of America
Tel: +001-315-455-6636 • Fax: +001-315-455-8216 • Email: sales@rkbopto.com
Internet: www.rkbopto.com / www.webinspection.us / www.hole-detection.com

Alarm events

Date by Month	Product	Reel	Description	Time
Tuesday, January 28, 2002				
SR50GT90				
		1	Reel IO controller	4:04:06 PM
			GMS Powerup	4:04:06 PM
			GMS Powerup	4:06:10 PM
			Reel IO controller	4:08:10 PM
			GMS Powerup	4:14:29 PM
			Reel IO controller	4:14:35 PM
			GMS Powerup	4:18:55 PM
			Reel IO controller	4:18:55 PM
			Reel IO controller	4:20:17 PM
			GMS Powerup	4:20:17 PM
			Reel IO controller	4:21:20 PM
			GMS Powerup	4:21:20 PM
			Defect classes updated	4:07:23 PM
			Repeating defect: 390	4:08:11 PM
Wednesday, January 30, 2002				
SR50GT90				
		1	GMS Powerup	7:33:21 AM

Alarm Event Reports

Defect events

Date by Month	Product	Reel	Meter	Ch.	Type	Time
Tuesday, January 28, 2002						
SR50GT90						
		1				
			64	1	Holes large	4:17:15 PM
			407	1	Holes medium	4:07:51 PM
			697	1	Spots small	4:09:06 PM
			775	1	Spots medium	4:08:11 PM
			833	1	Holes medium	4:08:20 PM
			952	1	Spots large	4:10:12 PM
			1370	1	Spots small	4:10:46 PM
Wednesday, January 30, 2002						
SR50GT90						
		1				
			30	1	Holes medium	8:48:47 AM
			57	1	Holes small	8:48:53 AM
			14	1	Spots small	7:33:40 AM
			89	1	Spots medium	7:33:44 AM
			115	1	Holes small	7:33:51 AM
			141	1	Holes medium	8:48:59 AM

Defect Event Reports

Reel turn-up event

Date by Month	Product	Reel	Meter	Time
Tuesday, January 28, 2002				
SR50GT90				
		1	1385	4:10:48 PM
Wednesday, January 30, 2002				
SR50GT90				
		1	1365	7:38:05 AM
		2	1382	7:42:54 AM
		3	1383	7:47:42 AM
		4	1383	7:52:33 AM
		5	1384	7:56:52 AM
		6	1386	8:01:21 AM
		7	1388	8:06:00 AM
		8	1385	8:10:45 AM
		9	1383	8:15:25 AM
		10	1388	8:20:07 AM
		11	1383	8:24:46 AM
		12	1389	8:29:31 AM
		13	1385	8:34:03 AM
		14	1385	8:38:39 AM

Reel Turn Up Events

Web-break event

Date by Month	Product	Reel	Meter	Time
Tuesday, January 28, 2002				
SR50GT90				
		1		
			52	4:21:42 PM
			516	4:17:52 PM
Wednesday, January 30, 2002				
SR50GT90				
		1		
			414	7:35:09 AM
			429	8:48:34 AM
			636	8:48:29 AM
			952	7:37:26 AM
			1036	7:38:33 AM
		2		
			636	7:40:54 AM
			1123	8:54:52 AM
		3		
			320	7:44:22 AM
			429	8:48:34 AM

Web Break Events



R.K.B. OPTO-ELECTRONICS, INC.

6677 Moore Road • Syracuse, New York • 13211 • United States of America
 Tel: +001-315-455-6636 • Fax: +001-315-455-8216 • Email: sales@rkbopto.com
 Internet: www.rkbopto.com / www.webinspection.us / www.hole-detection.com