

EQUIPMENT PICTORAL

Model 3030 OPTOMIZER® Machine Vision Web Inspection Technology



**Electronic Control
Stations**



**Inspection Station
Tending Side**



**Inspection Station
Drive Side**



**Inspection Station
Tending Side**



**Lighting Technique
(line scan)**



**Lamp Power
Assembly**

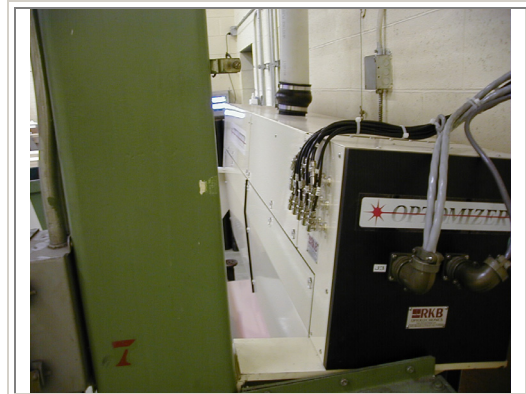
R.K.B. OPTO-ELECTRONICS, INC.

6677 Moore Road • Syracuse, New York • 13211 • United States of America
Tel: +001-315-455-6636 • Fax: +001-315-455-8216 • Email: sales@rkbopto.com
Internet: www.rkbopto.com / www.webinspection.us / www.hole-detection.com

**Model 3030 OPTOMIZER® Machine Vision Web
Inspection Technology**



**Drive Side
View**



**Inspection Assembly
Drive Side**



**System Air
Purge Unit**



**Electronic Engineering
Workstation**



**Lighting/Camera
Layout**

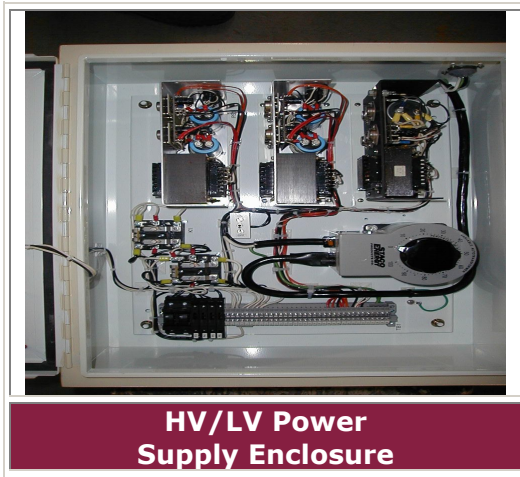


**Military Spec
Connections**

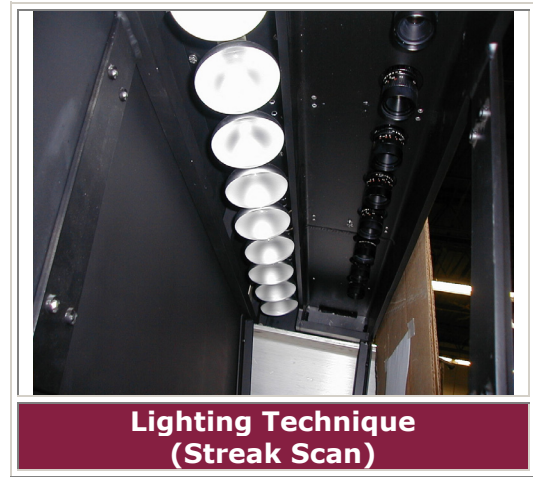
R.K.B. OPTO-ELECTRONICS, INC.

6677 Moore Road • Syracuse, New York • 13211 • United States of America
Tel: +001-315-455-6636 • Fax: +001-315-455-8216 • Email: sales@rkbopto.com
Internet: www.rkbopto.com / www.webinspection.us / www.hole-detection.com

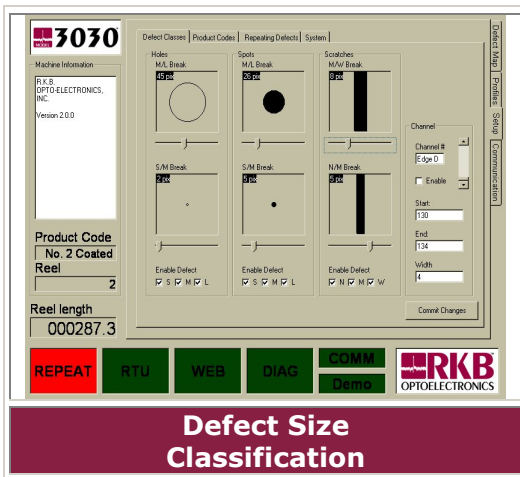
Model 3030 OPTOMIZER® Machine Vision Web Inspection Technology



HV/LV Power Supply Enclosure



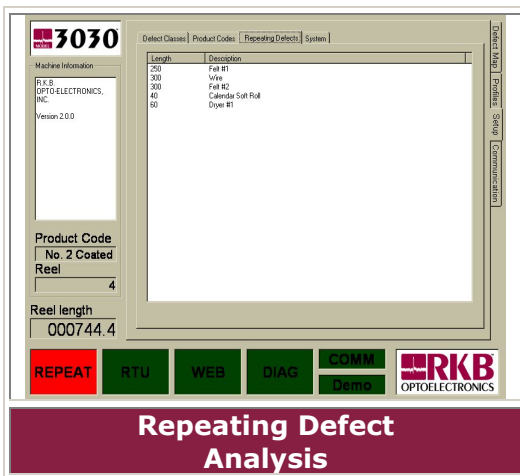
Lighting Technique (Streak Scan)



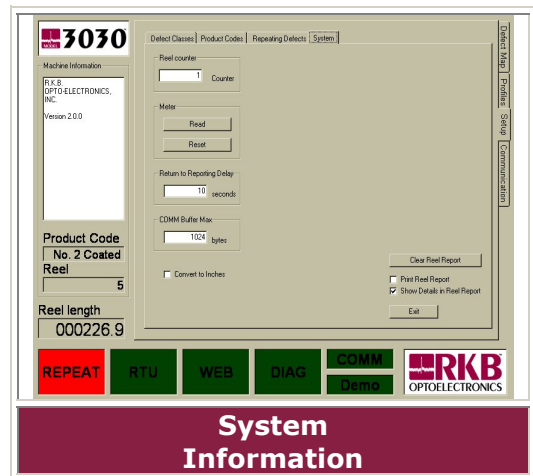
Defect Size Classification



Product Code Selection



Repeating Defect Analysis



System Information

R.K.B. OPTO-ELECTRONICS, INC.

6677 Moore Road • Syracuse, New York • 13211 • United States of America
 Tel: +001-315-455-6636 • Fax: +001-315-455-8216 • Email: sales@rkbopto.com
 Internet: www.rkbopto.com / www.webinspection.us / www.hole-detection.com

Model 3030 OPTOMIZER® Machine Vision Web Inspection Technology



3040

Machine Information
R.K.B. OPTO-ELECTRONICS, INC.
Version 2.0.0

Product Code: Test 01
Reel: 1
Reel length: 000377.3

Terminal

```

PRTQL=0,TO=1,FR0M=1,MSG=MTFPLS,METER= 301
PRTQL=0,TO=1,FR0M=1,MSG=MTFPLS,METER= 302
PRTQL=0,TO=1,FR0M=1,MSG=DPCT,CNLS=SCDE=3,CLASS=SCRATCH,METER= 310
PRTQL=0,TO=1,FR0M=1,MSG=MTFPLS,METER= 313
PRTQL=0,TO=1,FR0M=1,MSG=MTFPLS,METER= 306
PRTQL=0,TO=1,FR0M=1,MSG=DPCT,CNLS=SCDE=1,CLASS=SCRATCH,METER= 291
PRTQL=0,TO=1,FR0M=1,MSG=MTFPLS,METER= 263
PRTQL=0,TO=1,FR0M=1,MSG=MTFPLS,METER= 301
PRTQL=0,TO=1,FR0M=1,MSG=MTFPLS,METER= 245
PRTQL=0,TO=1,FR0M=1,MSG=MTFPLS,METER= 205
PRTQL=0,TO=1,FR0M=1,MSG=MTFPLS,METER= 191
    
```

RS-422 / RS-232 settings

LAN settings

Current port: []
Settings: []
Open: []
Close: []
Ping: []

Board IP address: 10.10.10.255
Broadcast port: 1021
Local IP address: 10.10.10.2
Local port: 1010
Open: []
Ping: []

REPEAT RTU WEB DIAG COMM Demo RKB OPTOELECTRONICS

Communications

3030

Machine Information
R.K.B. OPTO-ELECTRONICS, INC.
Version 2.0.0

Product Code: No. 2 Coated
Reel: 8
Reel length: 000420.7

Current Hole Counts

S	M	L	This Product	S	M	L
1	1	1	10	9	10	

Current Spot Counts

S	M	L	This Product	S	M	L
0	0	0	10	9	4	

Current Scratch Counts

S	M	L	This Product	S	M	L
0	0	0	0	0	0	

Counts | Holes | Spots | Scratches

REPEAT RTU WEB DIAG COMM Demo RKB OPTOELECTRONICS

Defect Profiling

3030

Machine Information
R.K.B. OPTO-ELECTRONICS, INC.
Version 2.0.0

Product Code: No. 2 Coated
Reel: 9
Reel length: 000364.8

Hole Defect Profile

Hole / Reel

Hole / Product

Counts | Holes | Spots | Scratches

REPEAT RTU WEB DIAG COMM Demo RKB OPTOELECTRONICS

Hole Defect Profile

3030

Machine Information
R.K.B. OPTO-ELECTRONICS, INC.
Version 2.0.0

Product Code: No. 2 Coated
Reel: 12
Reel length: 000629.3

Spot Defect Profile

Spots / Reel

Spots / Product

Counts | Holes | Spots | Scratches

REPEAT RTU WEB DIAG COMM Demo RKB OPTOELECTRONICS

Spot Defect Profile

3030

Machine Information
R.K.B. OPTO-ELECTRONICS, INC.
Version 2.0.0

Product Code: No. 2 Coated
Reel: 13
Reel length: 000239.4

Coating Streak Profile

Scratches / Reel

Scratches / Product

Counts | Holes | Spots | Scratches

REPEAT RTU WEB DIAG COMM Demo RKB OPTOELECTRONICS

Coating Streak Profile

3030

Machine Information
R.K.B. OPTO-ELECTRONICS, INC.
Version 2.0.0

Product Code: No. 2 Coated
Reel: 6
Reel length: 000484.5

Defect Real Time Mapping

Events

1090	142	246	523	797	832	1106	1117	189	271	298
------	-----	-----	-----	-----	-----	------	------	-----	-----	-----

Reel Turn Up: 11:24:41 AM 04/09/2002

Reel Turn Up: 11:29:36 AM 04/09/2002

Scratch Details

Index	Reel	Ch.	Stat	End	Total	Class
1						
2						
3						
4						
5						

Counts | Holes | Spots | Scratches

REPEAT RTU WEB DIAG COMM Demo RKB OPTOELECTRONICS

Defect Real Time Mapping

R.K.B. OPTO-ELECTRONICS, INC.

6677 Moore Road • Syracuse, New York • 13211 • United States of America
 Tel: +001-315-455-6636 • Fax: +001-315-455-8216 • Email: sales@rkbopto.com
 Internet: www.rkbopto.com / www.webinspection.us / www.hole-detection.com

Alarm events

Date by Month	Product	Reel	Description	Time
Tuesday, January 28, 2002				
SR50GT90				
	1		Re-initIO controller	4:04:06 PM
			O&M Powerup	4:04:06 PM
			O&M Powerup	4:06:10 PM
			Re-initIO controller	4:14:26 PM
			O&M Powerup	4:14:35 PM
			Re-initIO controller	4:16:55 PM
			O&M Powerup	4:16:55 PM
			Re-initIO controller	4:20:17 PM
			O&M Powerup	4:20:17 PM
			Re-initIO controller	4:21:28 PM
			O&M Powerup	4:21:28 PM
			Defect classes updated	4:07:22 PM
			Repeating defect 388	4:08:11 PM
Wednesday, January 30, 2002				
SR50GT90				
	1		O&M Powerup	7:33:21 AM

Alarm Event Reports

Defect events

Date by Month	Product	Reel	Meter	Ch.	Type	Time
Tuesday, January 28, 2002						
SR50GT90						
	1					
		84	1		Holes large	4:17:15 PM
		407	1		Holes medium	4:07:51 PM
		697	1		Spots small	4:09:06 PM
		775	1		Spots medium	4:08:11 PM
		833	1		Holes medium	4:08:26 PM
		952	1		Spots large	4:10:12 PM
		1370	1		Spots small	4:10:46 PM
Wednesday, January 30, 2002						
SR50GT90						
	1					
		30	1		Holes medium	8:48:47 AM
		57	1		Holes small	8:48:53 AM
		74	1		Spots small	7:33:48 AM
		89	1		Spots medium	7:33:44 AM
		115	1		Holes small	7:33:55 AM
		341	1		Holes medium	8:48:19 AM

Defect Event Reports

Reel turn-up event

Date by Month	Product	Reel	Meter	Time
Tuesday, January 28, 2002				
SR50GT90				
	1	1385		4:10:48 PM
Wednesday, January 30, 2002				
SR50GT90				
	1	1385		7:38:05 AM
	2	1382		7:42:54 AM
	3	1382		7:47:43 AM
	4	1383		7:52:23 AM
	5	1384		7:58:52 AM
	6	1384		8:01:21 AM
	7	1385		8:08:05 AM
	8	1385		8:10:45 AM
	9	1383		8:15:25 AM
	10	1390		8:20:07 AM
	11	1383		8:24:46 AM
	12	1389		8:29:34 AM
	13	1385		8:34:03 AM
	14	1385		8:38:38 AM

Reel Turn Up Events

Web-break event

Date by Month	Product	Reel	Meter	Time
Tuesday, January 28, 2002				
SR50GT90				
	1			
		52		4:21:43 PM
		515		4:17:52 PM
Wednesday, January 30, 2002				
SR50GT90				
	1			
		414		7:35:08 AM
		429		8:48:34 AM
		639		8:49:29 AM
		952		7:37:26 AM
		1036		7:36:33 AM
	2			
		829		7:40:54 AM
		1123		8:54:52 AM
	3			
		320		7:44:23 AM
		625		8:59:53 AM

Web Break Events



R.K.B. OPTO-ELECTRONICS, INC.

6677 Moore Road • Syracuse, New York • 13211 • United States of America
 Tel: +001-315-455-6636 • Fax: +001-315-455-8216 • Email: sales@rkbopto.com
 Internet: www.rkbopto.com / www.webinspection.us / www.hole-detection.com