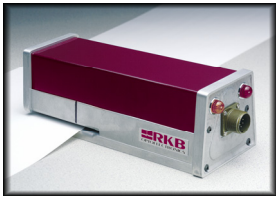


R.K.B. MACHINE VISION INSPECTION

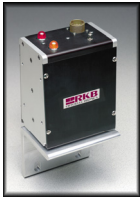


Model 1032

This splice detection technologies proven performance reduces costs, downtime and ensures product quality. This unit provides ultra-alert sentinel response in any web situation calling for immediate notification of a splice, tear-out, foldover or web break in all forms on non-metallic web fed processes.

Specifications

Power: 120/240 VAC, 50/60 Hz, Single Phase
Dimensions: 4.5 x 4.5 x 12 inches (11.43 x 11.43 x 30.48 cm), Universal Mounting holes located bottom side
Total web Thickness: 0.20 inches (5.08mm)
Total Weight: Approximately 7 lbs (3 Kilogram)



Model 1032B

This splice detector technology is the most reliable method of splice, missing ply, missing ply, tearouts and web break detection. The 1032B provides ultra-alert sentinel service in any web situation calling for immediate notification of a splice in all forms on non-metallic web material.

Specifications

Power: 120/240 VAC, 50/60 Hz, Single Phase
Dimensions: 4.5 x 4.5 x 12 inches (11.43 x 11.43 x 30.48 cm), Universal Mounting holes located on the sides
Total web Thickness: 0.25 inches (6.35mm)
Total Weight: Approximately 7 lbs (3 Kilogram)



Model 1108

Our Register Control WIS ensures material registration, can detect any bug or keymark, improves delivered quality, reduces cost, and helps you achieve reliable high speed operations.

Specifications

Power: 110/240 VAC, 50/60 Hz, Single Phase
Registration Accuracy: 1/16" (1.5 mm) or Less
Marks Detected: Non-Keyed marks; keyed marks; Printed marks



Model 1280

Positively mark defects with our Multicolor Spray Marking System. Incorporate our spray marking technology to accomplish automatic control as part of a complete inspection solution that tracks web edge motion, Pinpoint location of defect faults, and improves your productivity.

Specifications

Power: 110/240 VAC, 50/60 Hz, Single Phase
Marking Width: up to 2" (50.8mm)
Web Tracking: up to 11" (27.94 cm)
Clean and Dry Air: 80 to 90 PSI
Ink Types: Water Based Inks



Model 2060

Expand your inspection capabilities with our Infrared Phototransistor Flaw Detection Technology. Fully qualify your products, add analysis and reporting, and most importantly, improve your productivity. Costs' starting at USD 45,000.00 this is RKB's most cost effective flaw detector worldwide.

Specifications

Power: 220/240 VAC, 50/60 Hz, Single Phase
Defects Types Detected: Hole & Spot
Defect Size Detected (min): 0.031" (0.8 mm) dia.
Illumination: Infrared Light

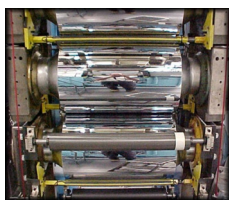


Model 2084

Choose cost effective hole detection with our Ultraviolet Hole Detection Technology. Improve profitability, fully qualify your product, and add analysis and reporting. Costs starting at USD 30,000.00 this is RKB's most cost effective hole detector worldwide.

Specifications

Power: 208/220/240 VAC, 50/60 Hz, Single Phase
Defects Types Detected: Hole Only
Defect Size Detected (min): 0.625" (1.5 mm) dia.
Basis Weight Minimum: 22 #/3300 sq. ft (35 gsm).
Illumination: Germicidal Ultraviolet



Model 9000

The Model 9000 MMFC imager technology was developed for the emerging markets of magnetic media and fuel cell technologies to combat very subtle defect anomalies. This technology maximizes profitability of your magnetic media and fuel cell production operations by providing immediate notification of defects that can be quickly corrected reducing waste

Specifications

Power: 120/240 VAC, 50/60 Hz, Single Phase
Defects Types Detected: Hole, spot, streak
Defect Size Detected (min): < 2 micron online

R.K.B. OPTO-ELECTRONIC, INC.
6677 Moore Road, Syracuse, New York 13211
United States of America • www.rkbopto.com
Tel: 001 (315) 455-6636 • Fax: 001 (315) 455-8216
Email: sales@rkbopto.com

SUZHOU R.K.B. OPTO-ELECTRONIC MACHINE VISION CO., LTD.
Room 406, Zhu Hui Commercial Bldg., 180 Zhu Hui Road
Suzhou, Jiangsu, China 215006 • www.cn.rkbopto.com
Tel: 85 (0)512 651 95593 • Fax: 86 (0)512 651 95583
Email: sales@rkbopto.com